

Contents

- 1. System requirements 4
- 2. Fundamental concepts 4
- 3. Compatible Devices 4
- 4. Languages available 6
- 5. Implementation 6
  - 5.1 Material required 6
  - 5.2 Installation 6
  - 5.3 Modification of the software’s language 9
  - 5.4 Search device 10
  - 5.5 Device firmware update 13
- 6. Device Configuration 14
  - 6.1 Configuration of device on your system 14
    - 6.1.1 Configuration page 15
  - 6.2 Configurable parameters of each module (examples) 16
  - 6.3 View pages 17
- 7. Off-line operation 18
  - 7.1 Import a configuration 18
  - 7.2 Export a configuration 19

## 1. System requirements

### Hardware:

- Intel® Core 2 Duo or AMD® Athlon X2® processor
- 2GB of RAM
- 320MB of available hard-disk space
- USB port for connection IDM Configurator
- **Supported operating systems:**
- Microsoft Windows XP (Professional) - Service Pack 3
- Microsoft Windows Vista - Service Pack 2
- Microsoft Windows 7 - Service Pack 3
- Microsoft Windows 10 - All Service Pack

### Installation and Display:

- on Computer

## 2. Fundamental concepts

The IDM Configuration Software offers the possibility of configuring CONTO Energy meters using a simple and intuitive procedure by the creation of a customized project based on personal needs and the actual system installed.

**Note:** IDM Configuration Software is free. To be downloaded from the IME web site. Once downloaded it will be useful for all remote configurations of CONTO Energy Meters

## 3. Compatible devices

### Software version 1.00.00

- Range **CONTO**
  - **Modbus**
    - Conto D2 63A 1ph Modbus (CE2DF3DTCL1)
    - Conto D2 63A 1ph Modbus MID (CE2DF3DTMID)
    - Conto D4 63A 3ph Modbus (CE4DF3DTCL1)
    - Conto D4 63A 3ph Modbus MID(CE4DF3DTMID)
    - Conto D4 5A 3ph Modbus(CE4TBDTCL1)
    - Conto D4 5A 3ph Modbus MID(CE4TBDTMID)
  - **Mbus**
    - Conto D2 63A 1ph Mbus MID(CE2DF3MTMID)
    - Conto D4 63A 3ph Mbus(CE4DF3MTCL1)
    - Conto D4 5A 3ph Mbus(CE4TBMTCL1)
    - Conto D4 5A 3ph Mbus MID(CE4TBMTMID)

---

❖ Range **Easy Connect**

- **Modbus**

- NEMO EC D4 63A (MKD4R63DT)
- NEMO EC D4 125A (MKD4R125DT)
- NEMO EC D4 Open Rogowski 1 Input (MFD4ORFCDT1)
- NEMO EC Graphic Display Open Rogowski 1 Input (MFD41ORFCDT)
- NEMO EC Graphic Display Open Rogowski 2 Input (MFD42ORFCDT)
- NEMO EC 96 63A (MK96R63DT)
- NEMO EC 96 125A (MK96R125DT)
- NEMO EC 96 Open Rogowski 1 Input (MF96ORFCDT1)
- NEMO EC Graphic Display Open Rogowski 1 Input (MF961ORFCDT)
- NEMO EC Graphic Display Rogowski 2 Input (MF962ORFCDT)

- **Mbus**

- NEMO EC D4 63A (MKD4R63MT)
- NEMO EC D4 125A (MKD4R125MT)
- NEMO EC D4 Open Rogowski 1 IN (MFD4ORFCMT)
- NEMO EC Graphic Display Open Rogowski 1 Input (MFD41ORFCMT)
- NEMO EC Graphic Display Open Rogowski 2 Input (MFD42ORFCMT)
- NEMO EC 96 63A (MK96R63MT)
- NEMO EC 96 125A (MK96R125MT)
- NEMO EC 96 Open Rogowski 1 Input (MF96ORFCMT1)
- EC Graphic Display Open Rogowski 1 Input (MF961ORFCMT)
- EC Graphic Display Open Rogowski 2 Input (MF962ORFCMT)

## 4. Languages available

### Languages:


- English
- Français
- Italiano

## 5. Implementation

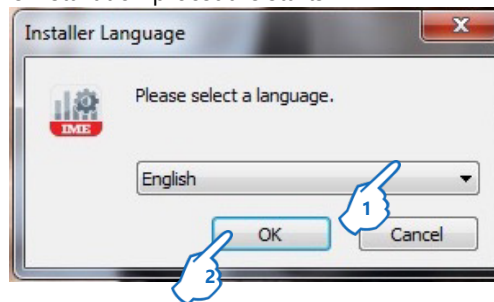
### 5.1 Material required

- Installation Kit (executable file ".exe")
- A computer with a compatible operating system (10, 7, etc.)

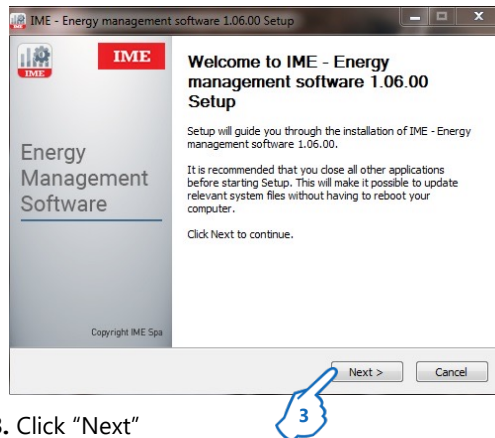
### 5.2 Installation

- Run the file  IME\_Energy\_management\_software\_Setup\_v.r.b.exe

The installation procedure starts

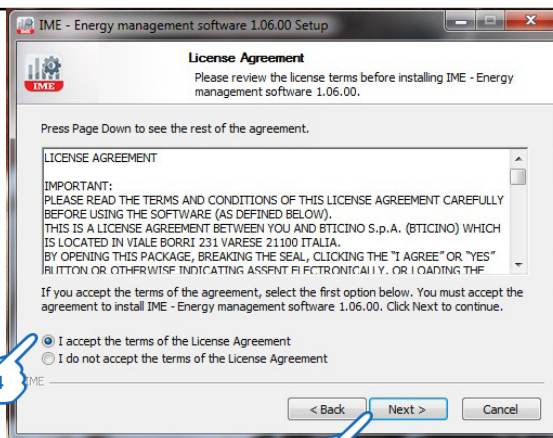


1. Choose the proper language
2. Click "OK"

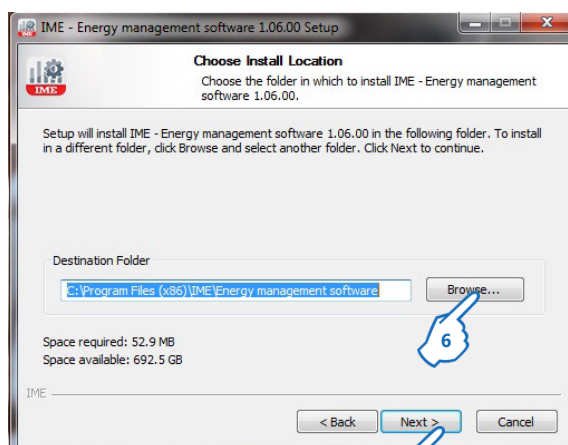


3. Click "Next"

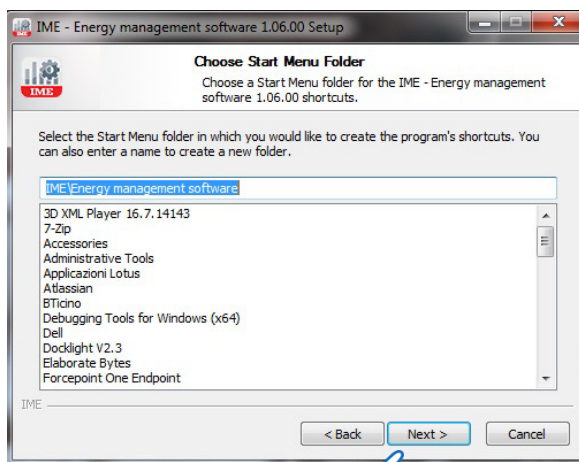
The License agreement page appears



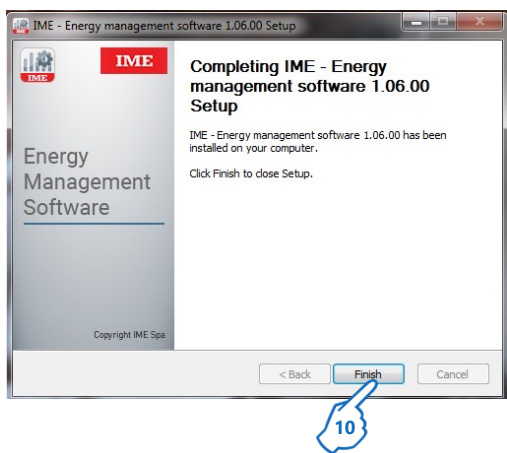
4. Click to declare to have read and accepted the contract
5. Click "Next"



6. Click "Browse" to choose the installation folder
7. Click "Next"



8. Click "Next"



Installation completed

**10.** Click "Finish"

On the desktop of your computer are created two shortcuts:

- Energy management software:



IME – Energy manager software



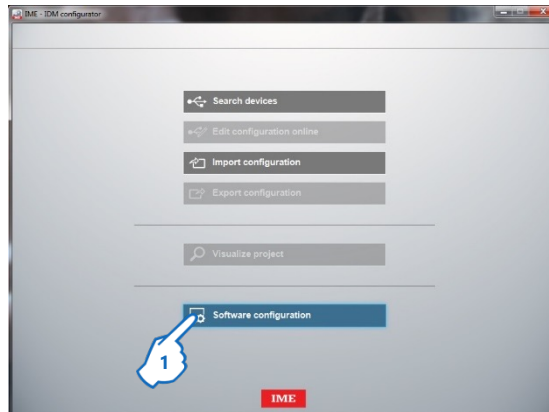
IME - NEMO SX Configurator



IME – IDM Configurator

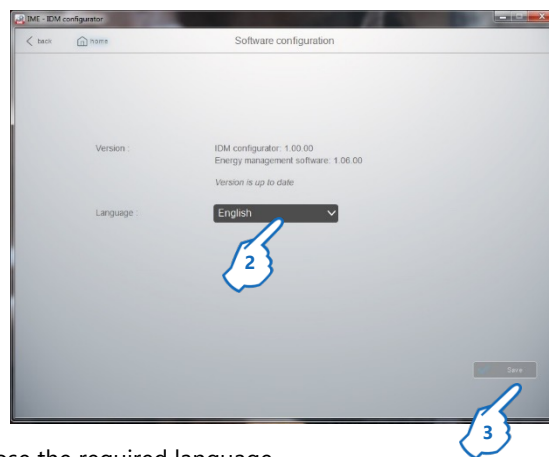
### 5.3 Modification of the software's language

- Procedure for changing language (if necessary)



In the software's home page

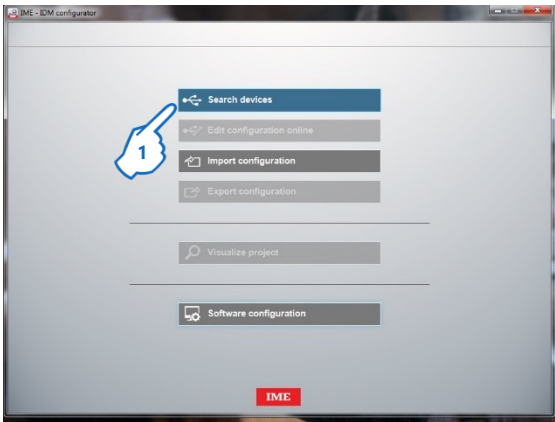
1. Click "Software configuration"



2. Choose the required language
3. Click "Save" to confirm

## 5.4 Search Devices

In the software's home page

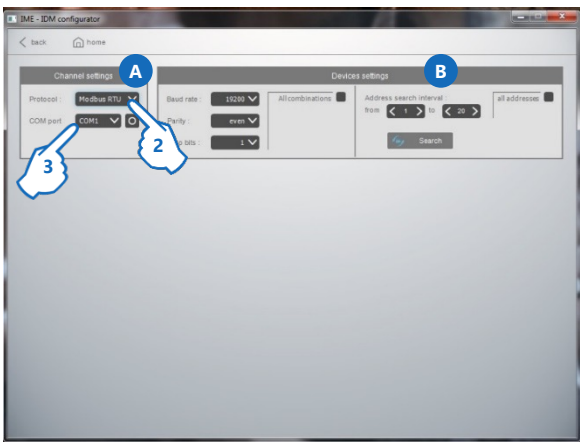


1. Click "Search Device"

The scan page is divided to 2 sections:

### A. Channel Settings

### B. Device Settings

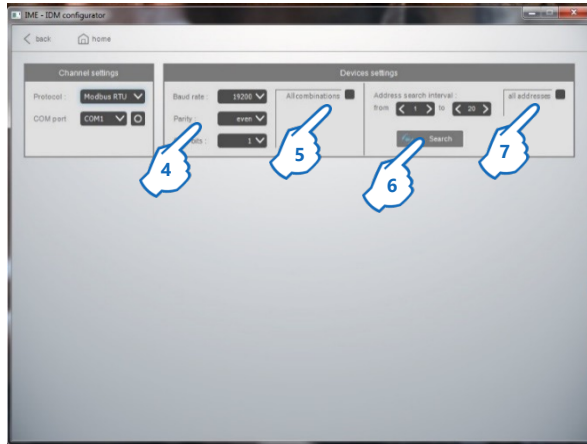


### A. Channel Setting

2. Choose the correct Communication Protocols.  
3 Software supports :  
**Modbus RTU**  
**Modbus TCP**  
**M-bus**
3. Choose the correct COM port.

### 5.4.1 Modbus RTU

#### B. Device Settings



4. Verify and choose the Correct Baud rate and Parity, otherwise
5. Choose the All Combinations.
6. Search in a specific range of addresses  
or
7. Choose All addresses.

### 5.4.2 Modbus TCP

First of all, it is needed a TCP gateway interface.

For example:

- **SXIIP: gateway Ethernet/RS485** (1:N)

In this case, you need to connect your PC to the same network of your Modbus TCP gateway. **(Ethernet)**



8. Enter the IP Address of your gateway.
9. Search in a specific range of addresses  
or
10. Choose All addresses

5.4.3 M-bus

First of all, you need a M-Bus Converter

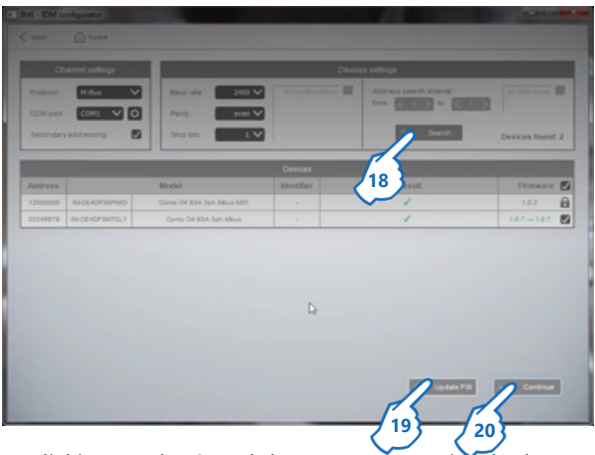
- 11. Choose the M-Bus Protocol.
- 12. Choose the correct COM port.



- 13. Verify and choose the Correct Baud rate and Parity, otherwise
- 14. Click on Search button

**Note:** You can search the Primary Addresses or the Secondary Addresses.  
17. Click Secondary Addressing for check.

5.4.4 Scan



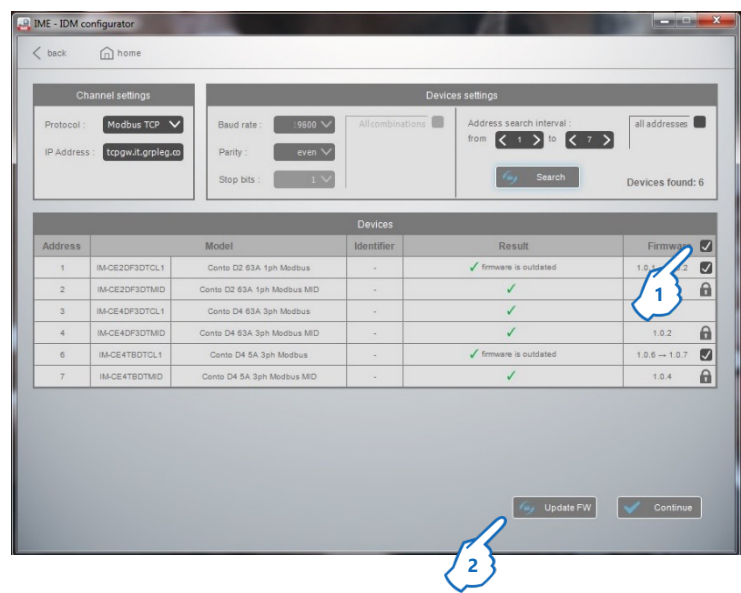
18. By clicking on the Search button, a page with the latest Firmware updates will be shown:

- MID devices are not updatable
- Updates available

- 19. Click Update FW
- 20. Click "Continue" to go to the edit page of the configuration read.

5.5 Device firmware update

As soon as the search devices page appears, you can see if updated firmware is available for each module.

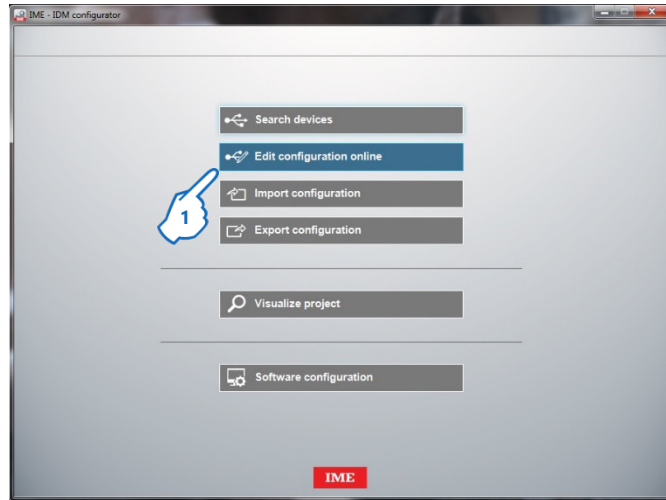


1. You can check the small window on top to update all the available firmware updates
2. Otherwise you can uncheck it and choose just the modules you would like to update
3. Finally, click on the update FW button (it might take some time to update, please wait until the software finishes the process)

## 6. Device Configuration

### 6.1 Configuration of devices on your system

In the Home page



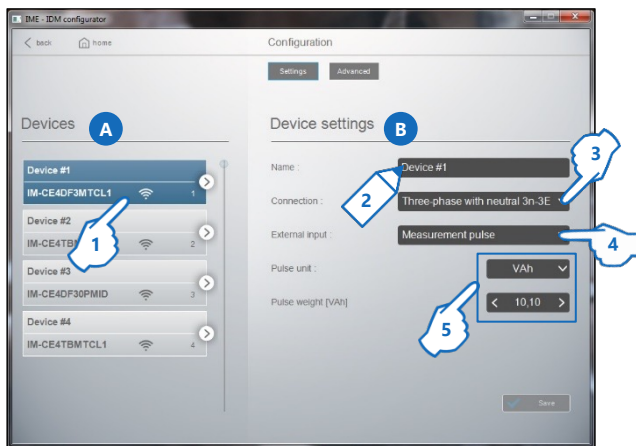
1. Click "Edit Configuration online"

The Configuration Page will be appeared.

### 6.1.1 Configuration Page

The page is divided into two sections:

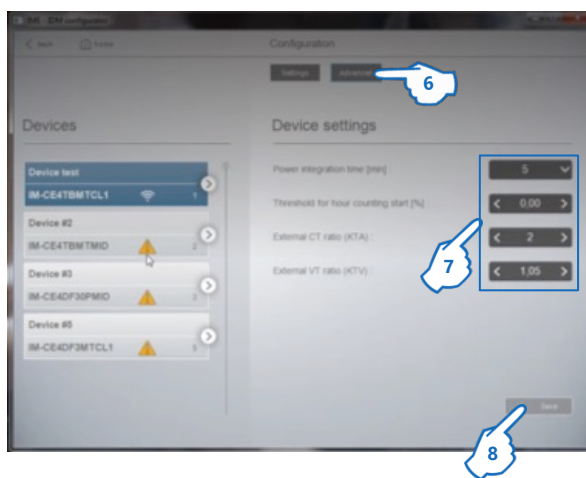
- A** List of the devices
- B** Configuration Settings for the selected device on the section A



#### • TO VIEW/CONFIGURE THE DEVICES CHARACTERISTICS

##### In Settings

1. Select a Device
2. Rename the Device
3. Click "Connection" and choose the correct connection
4. Click "External input" and choose the correct input
5. Click for assign the other control parameter



##### In Advanced

6. Click "Advanced" and a set additional parameters are shown
7. Click for assign the other control parameters
8. Click "Save" to confirm

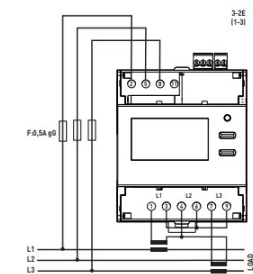
##### Note:

- Device connected to the Wi-Fi
- Device not connected to the Wi-Fi

**To be able to access the saved settings directly, click on "Export Configuration".**  
**For more details, see page 26**

6.2 Configurable parameters of each module

Examples of Configuration

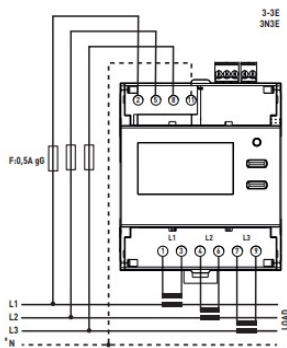


Device settings

Name : Lab 1

Connection : Three-phase w/o neutral 3-2E

External input : Tariff selection

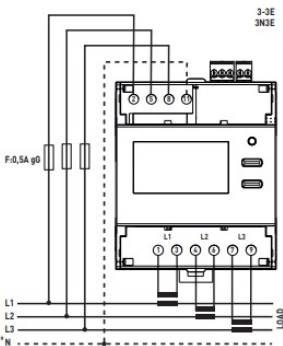


Device settings

Name : Lab 1

Connection : Three-phase w/o neutral 3-3E

External input : Tariff selection



Device settings

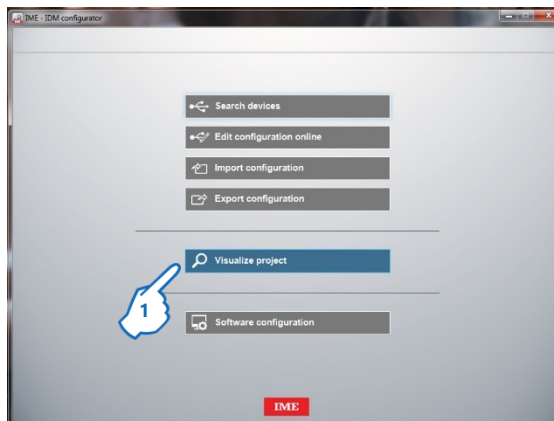
Name : Lab 1

Connection : Three-phase with neutral 3n-3E

External input : Tariff selection

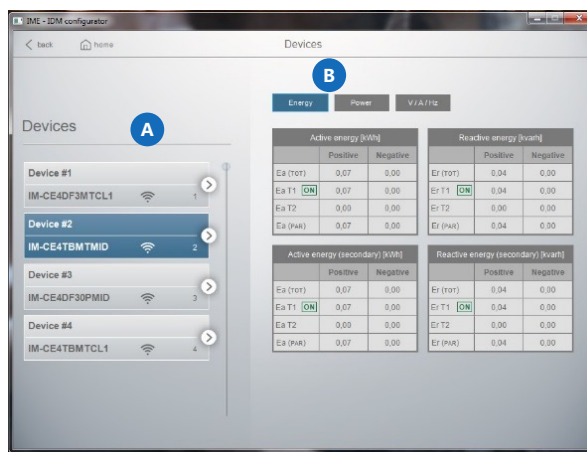
### 6.3 View pages

In the software's Home page



1. Click "Visualize project"

Devices display page appears



The page is divided into two e sections:

section **A** shows the Devices (Network icon shows if your device is connected or no, (in all 3 protocols: Modbus RTU, Modbus TCP, M-bus)  
 section **B** is the area where is possible to select several pages (according to the functions present in a Device):

- Measure: display of the quantities measured by a device:
  - Electricity measuring devices: Energy, Power, Voltages / Currents / Frequency, THD and Harmonics
  - THD and Harmonics are just available for the easy connects.

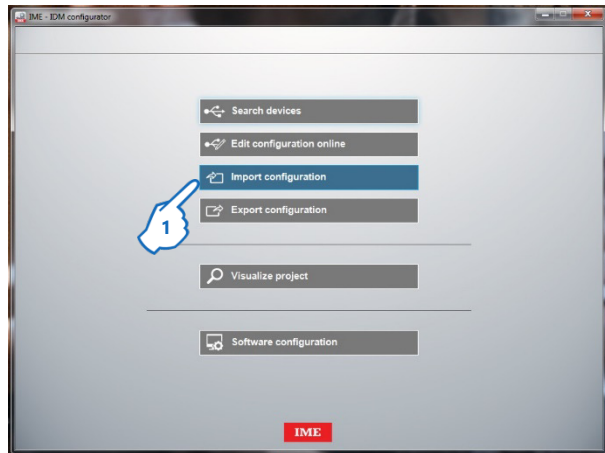
**Note:**

**ON** Indicates the active tariff

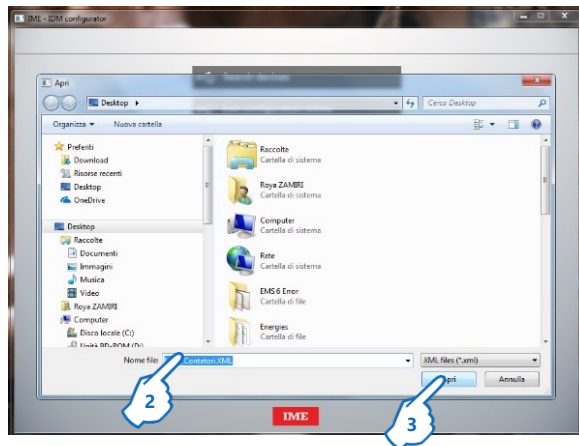
## 7. Off-line operation

### 7.1 Import a configuration

In the Software's home page



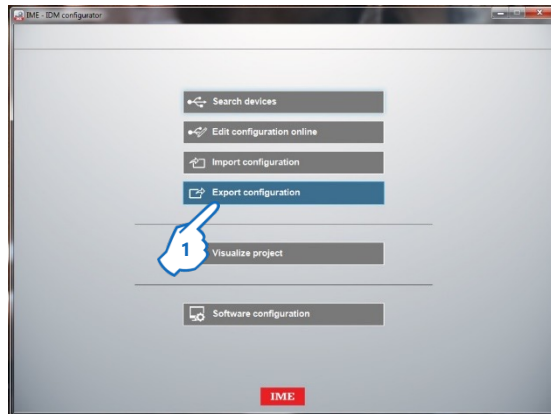
1. Click "Import Configuration"  
System configuration appears



2. Select the file to import (e.g. Configuration.XML), then
3. click "Open"  
Configuration is ready to be edit

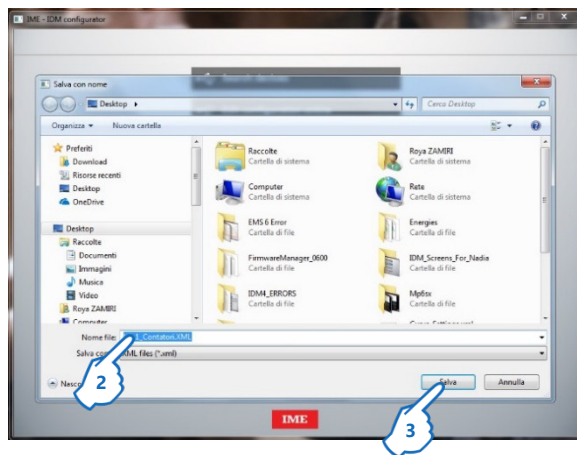
## 7.2 Export a configuration

In the System configuration page



1. Click "Export configuration"

A pop-up window appears



2. Select the where to save file, then

3. Click "Save"

Configuration is saved on your computer





A Group brand  **legrand**

BTicino SpA  
Viale Borri, 231  
21100 Varese -  
Italy  
[www.imeitaly.com](http://www.imeitaly.com)

BTicino reserves at any time the right to modify the contents of this booklet and to communicate, in any form and modality, the changes brought to the same.